

- ➔ Forward Link
 - Pilot Channel(s)
 - Sync Channel
 - Paging Channel(s)
 - Traffic Channels
- ➔ Reverse Link
 - Access Channel
 - Traffic Channel(s)

FOR PUBLICATION

2/11

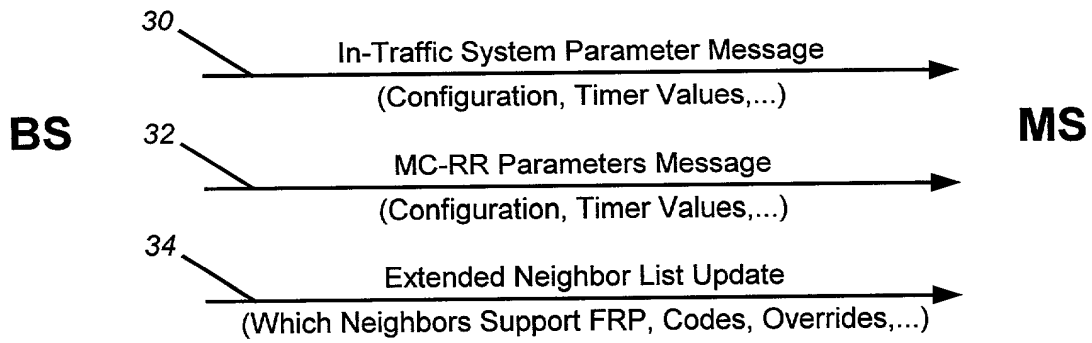


FIG. 3

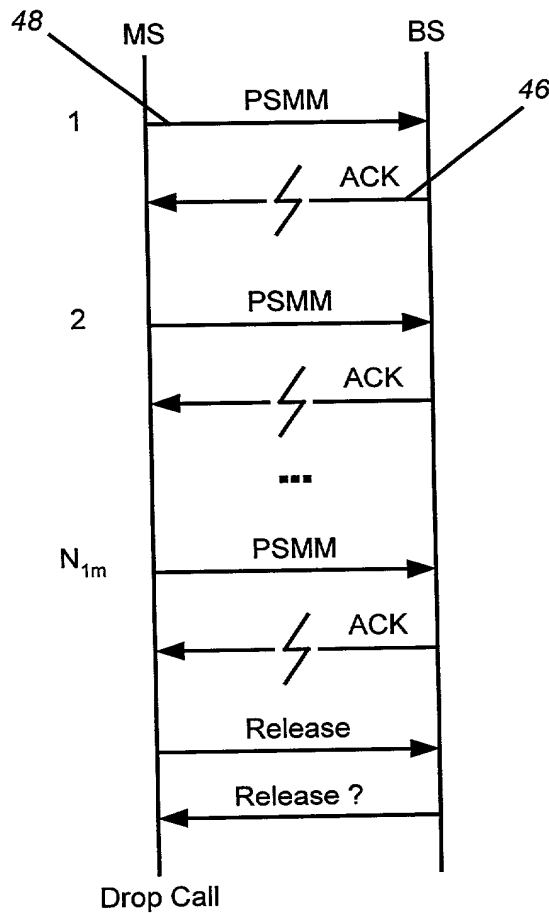


FIG. 5

FOR SE550

3/11

FIG. 4

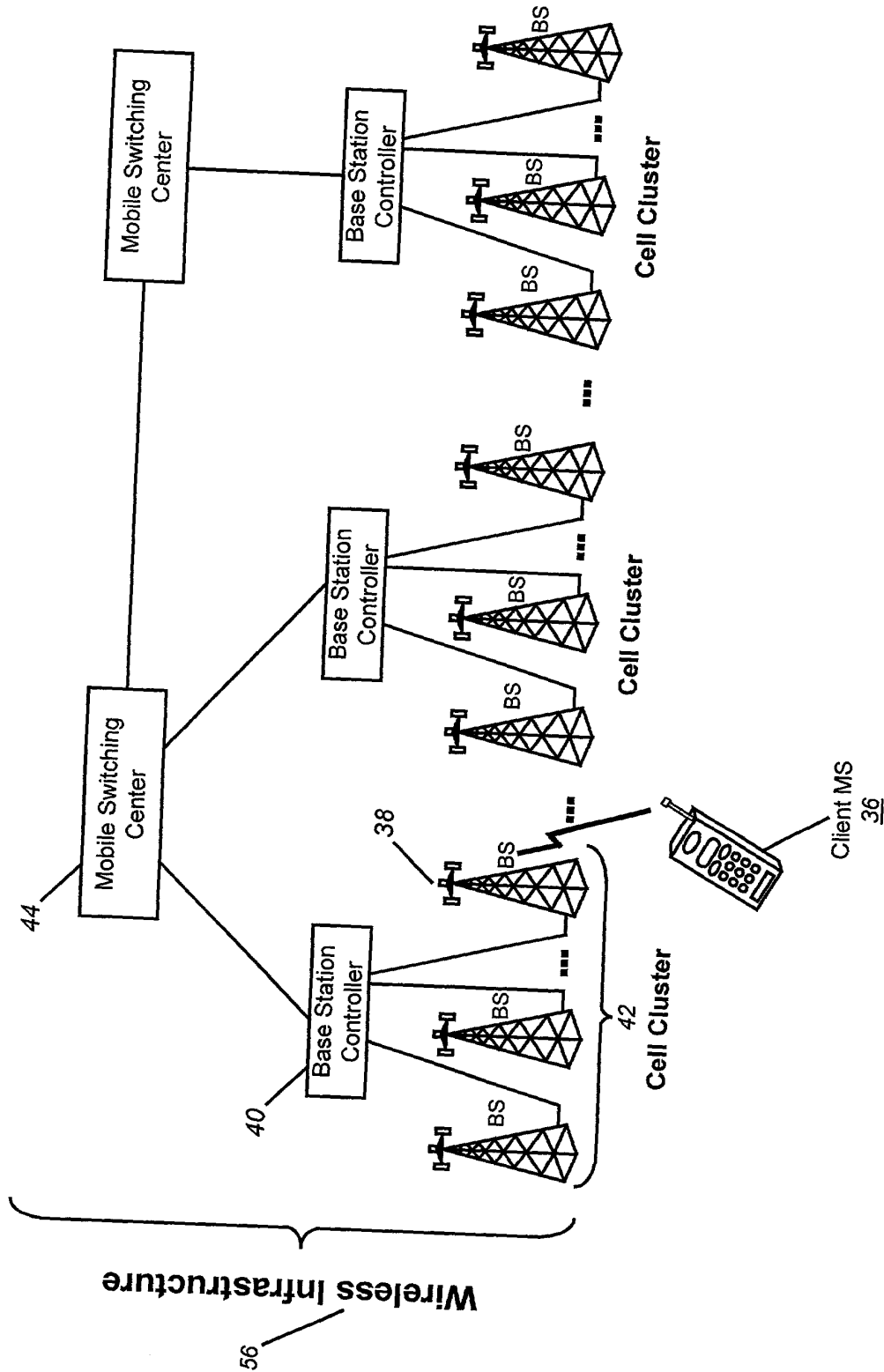


FIG. 4

4/11

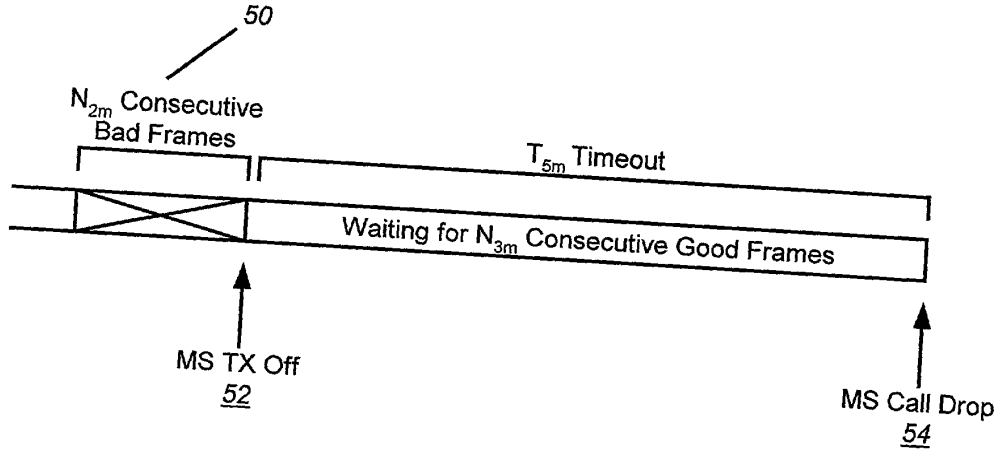


FIG. 6

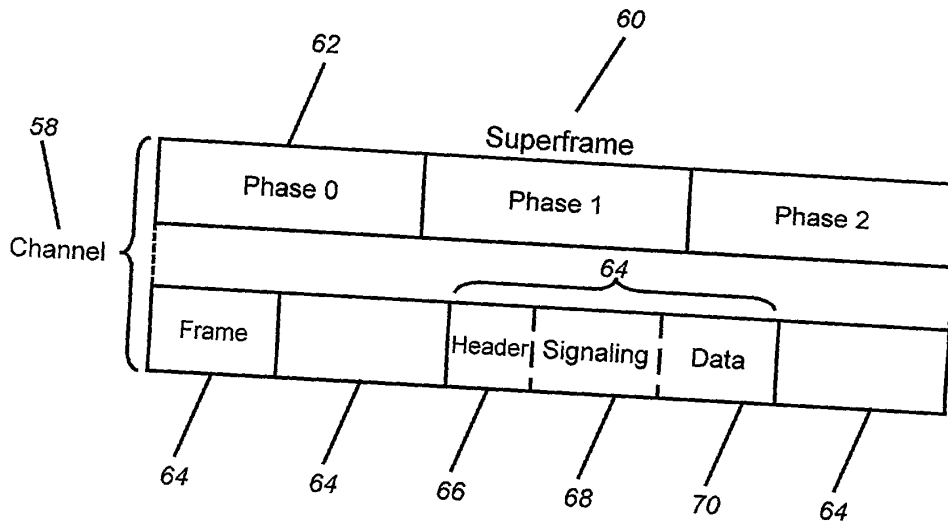


FIG. 7

FOR P. 935650

5/11

FIG. 8

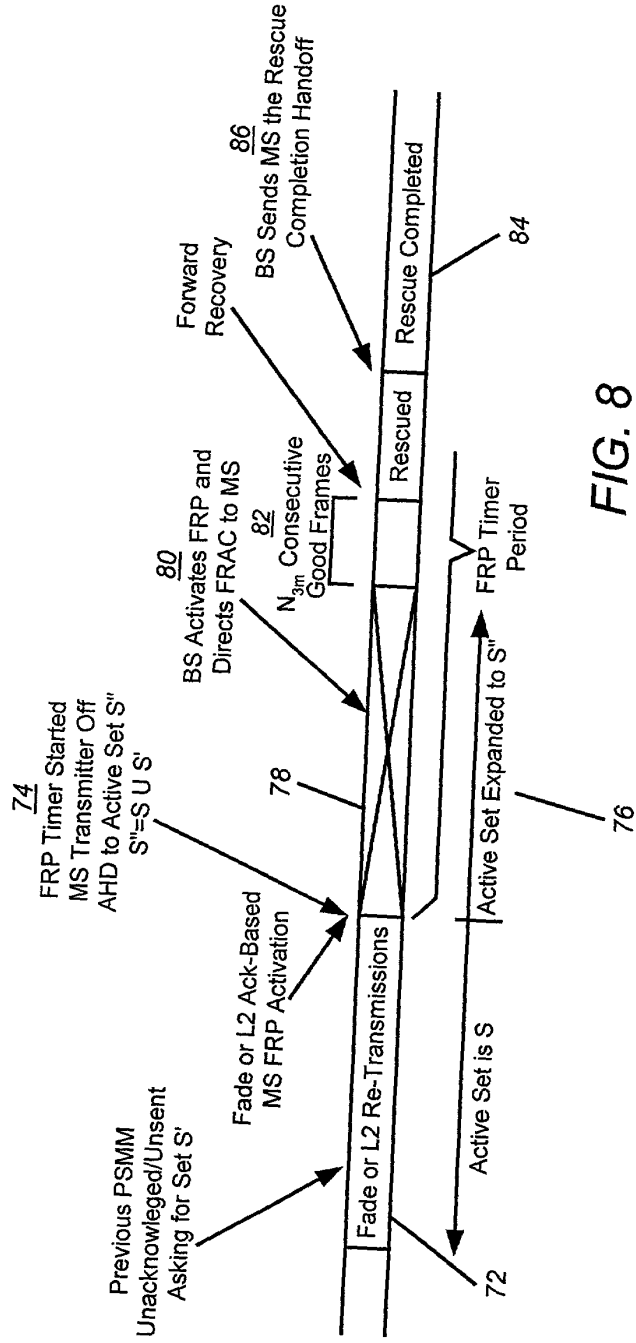
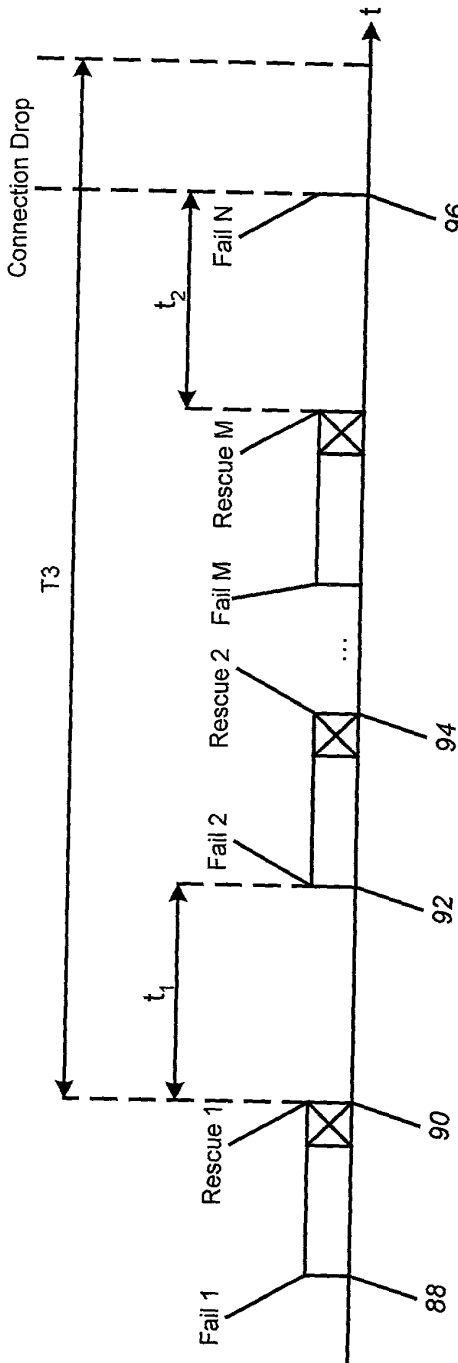


FIG. 8

6/11

FIG. 9



Where $t_2 < \text{TIME1} < t_1$

FIG. 9

100

f-csch Order	f-dsch Order	Order Code, ORDER (binary)	Order Qualification Code, ORDQ (binary)	More Fields other than ORDQ	Support Required	Name/Function
[...]						
Y	Y	100001	00000000	N	Y	Call Rescue Allow Order
Y	Y	100001	00000001	N	Y	Call Rescue Disallow Order
Y	Y	100001	00000010-11111111	N	Y	Call Rescue Control Order
[...]						
All Other Codes Are Reserved.						

FIG. 11

7/11

98

CR_RETRY_DELAY	Time
00000	No Delay
00001	1 Second
00010	2 Seconds
00011	5 Seconds
00100	10 Seconds
00101	30 Seconds
00110	1 Minute
Etc.	Etc.

FIG. 10

FOR SEEN

8/11

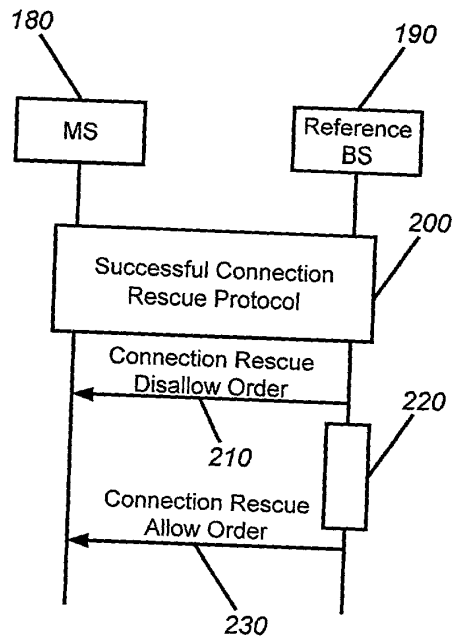


FIG. 13A

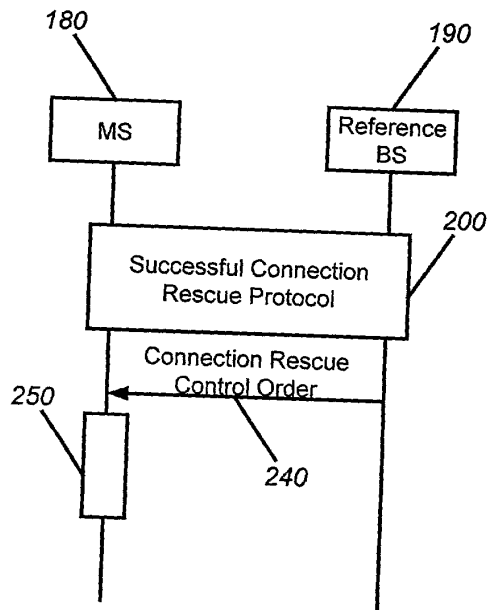


FIG. 13B

FOR P. 952660

9/11

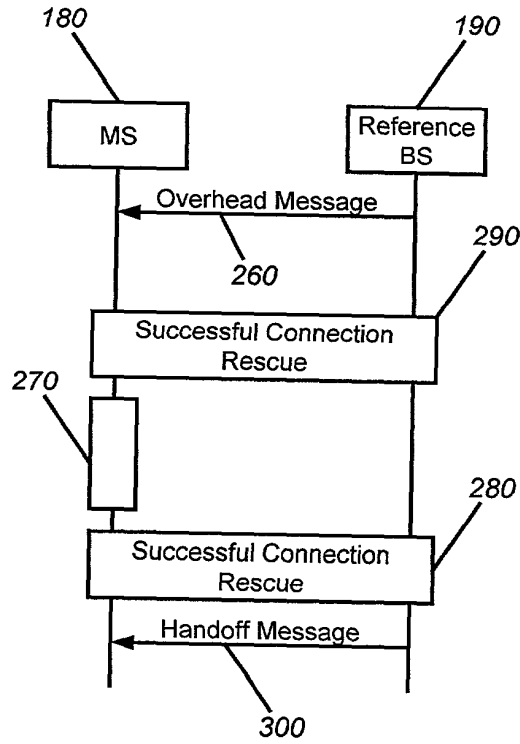


FIG. 13C

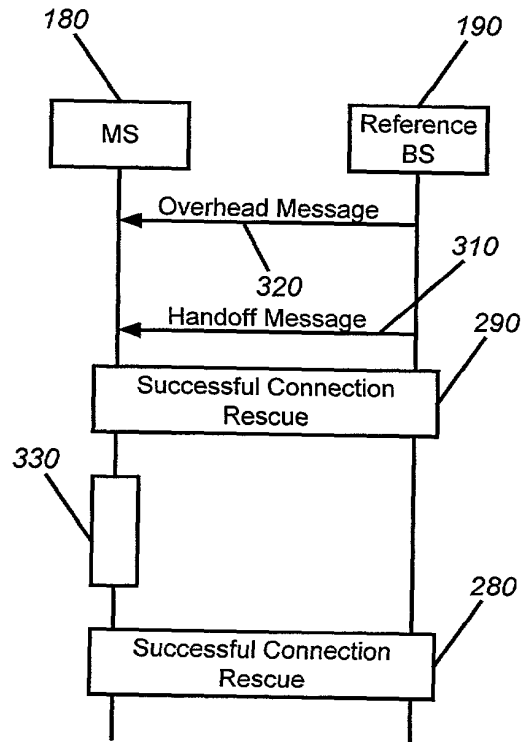


FIG. 13D

FOR PUBLICATION

10/11

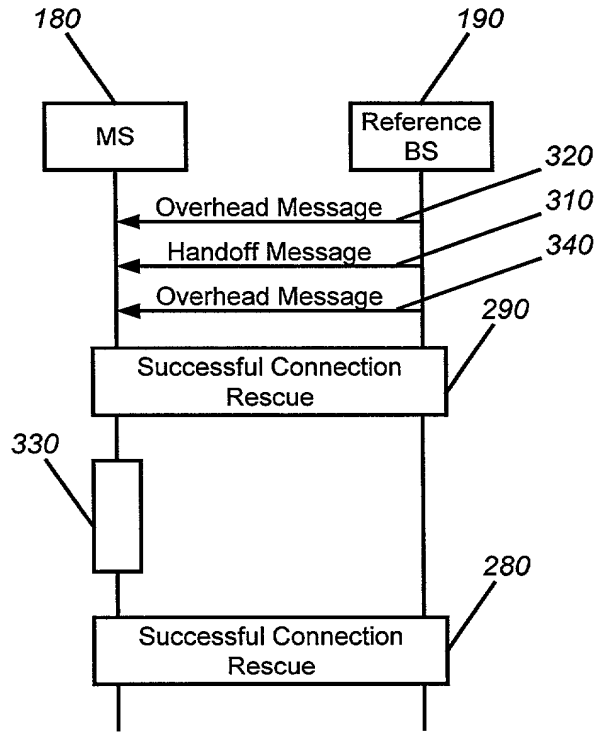


FIG. 13E

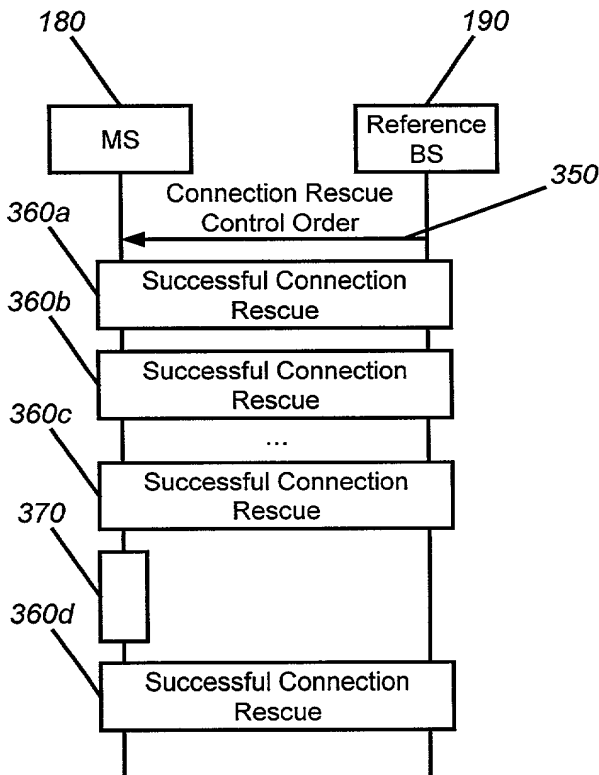


FIG. 13F

FIG. 13E

11/11

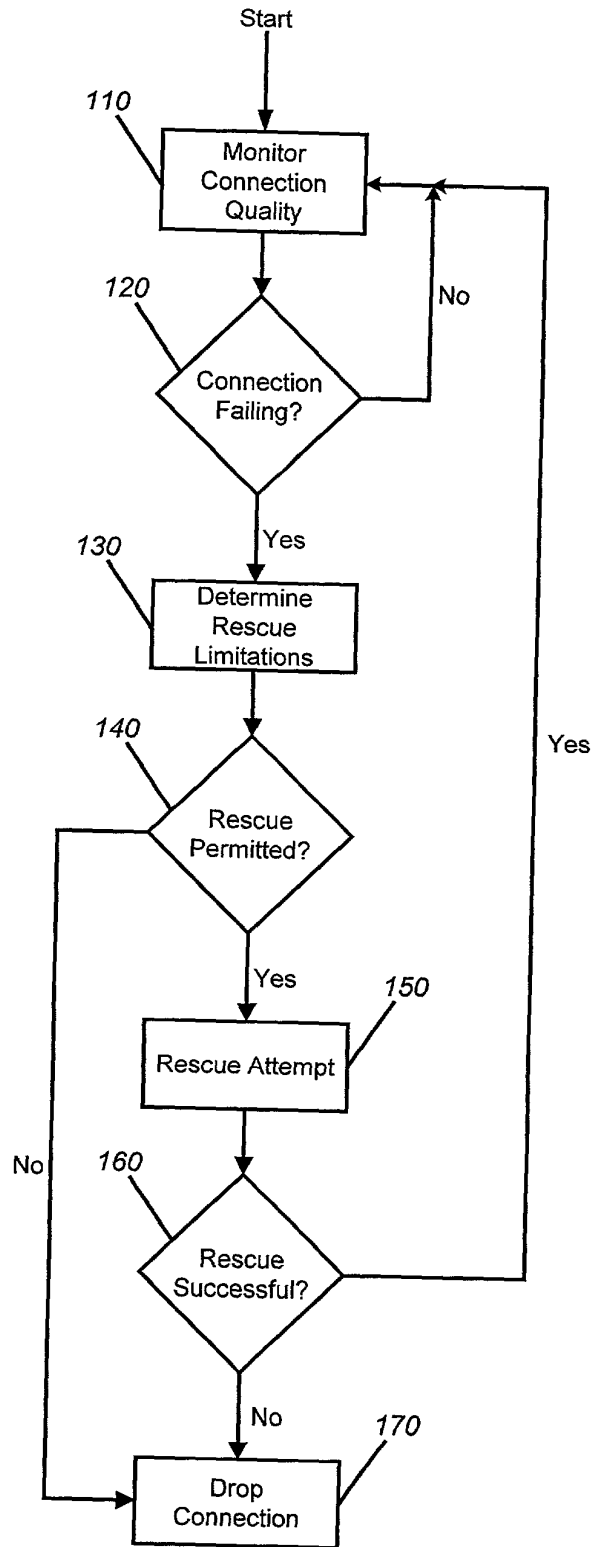


FIG. 12

Patent 336650